

SCUBA - FIX TECHNICAL RELEASE 3.0 : EXTRA STEPS FOR REPAIRING SCUBAPRO T-SERIES VALVE

Date : 20th Jan 2013

Abstract

This document provides the approved guidelines to carrying out Scuba-Fix Scubapro T-Series valve pre-repairs.

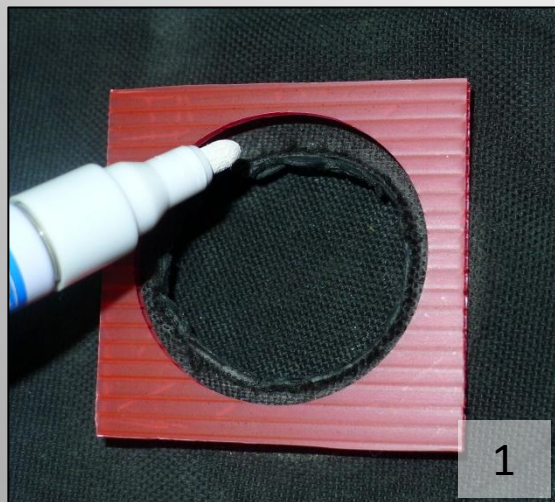
Besides watching the supplied video guide, extra preparation is needed before installation of a Scubapro T-Series valve.

This write up will demonstrate to you what these actions are and how to carry them out.

Scope

1. HOW TO MARK OUT THE PRE-CUT HOLE
2. HOW TO CUT & INSERT VALVE

1. HOW TO MARK OUT THE PRE-CUT HOLE



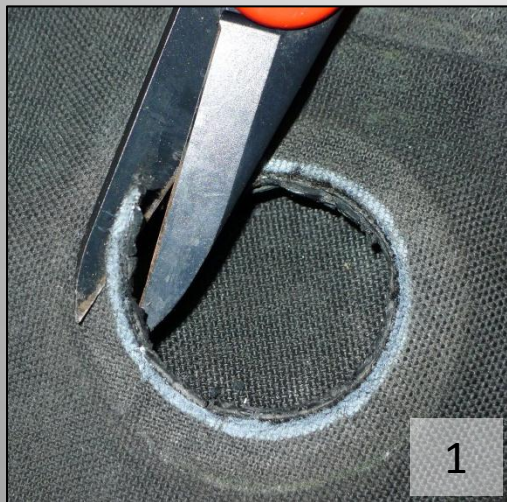
Mark out with a paint marker.



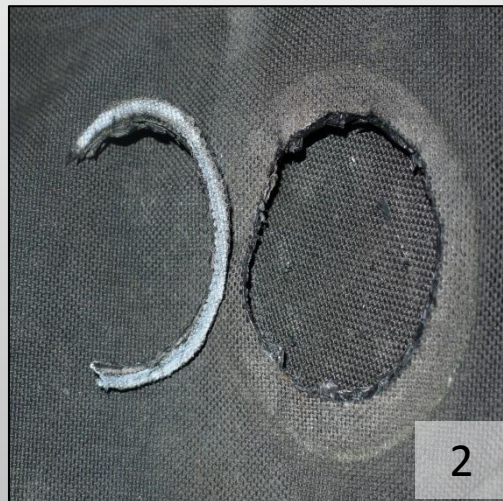
Diameter is between 47 to 48mm.

- A. Watch the supplied video till the broken valve has been removed.
- B. Inside your Scubapro T-Series repair valve box, there will a marker card for you to place over the original hole. Use a white paint marker to mark out the hole for cut out. (Picture 1)
- C. The Diameter after Mark out is between 47 to 48mm. (Picture 2)

2. HOW TO CUT & INSERT VALVE



Cut out the mark out



Removed extra fabric



Insert Scubapro repair valve

- A. Use a cutter to remove the marked out area. (Picture 1)
- B. After removing the fabric, sand down to remove sharp edges and concurrently roughen the material left inside the BCD. (Picture 2)
- C. Refer to video, fold the BCD into an elliptical and insert the valve. (Picture 3)
- D. Refer to supplied video to complete the repair.