

## SCUBA - FIX TECHNICAL RELEASE 4.0 : HOW TO REMOVE OLD VALVE FOR RECYCLING

### Abstract

This document provides the approved guidelines to carrying out current Scuba-Fix repair kit valves removal method.

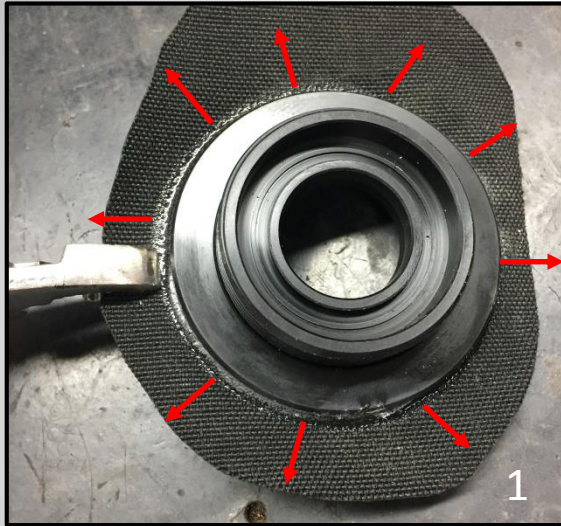
As the BCD age and eventually reach the end of the product life cycle, we will need to have a method / practice of removing the repair kit for recycling.

This following write up will ensure you will be able to remove the valve from the current BCD.

### Scope

1. REMOVING OF OLD FABRIC.
2. MOUNTING OF VALVE ONTO A BENCH VICE
3. USING A 18" PIPE WRENCH TO REMOVE THE LOCK RING

## 1. REMOVING OF OLD FABRIC



Cut Out Valve From The Old BCD.



Valve After Removing Old Fabric.

- A. Cut a much larger area around the valve that you wish to recycle. (Picture 1)
- B. Use a pair of pliers, grip on the excess fabric and pull outwards, all round the valve to loosen the fabric.
- C. As the fabric loosens all round, remove the fabric from the valve. (Picture 2)

Once the fabric is removed from the valve, effectively the only holding point of the lock ring to valve are just 2 to 3 threads of ring with adhesive.



6mm Square Block.

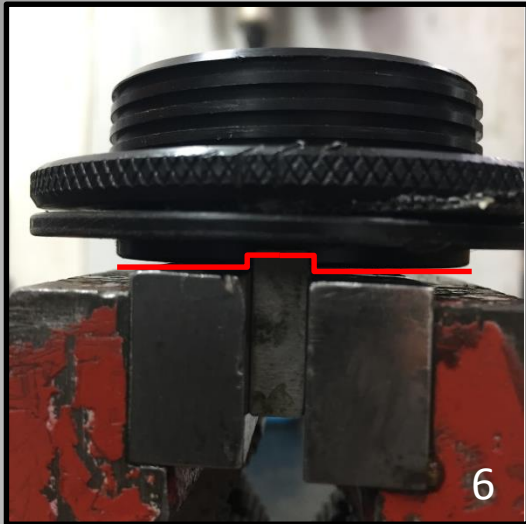


Longer Than The Diameter Of The Valve



Clamp 6mm Square Block Onto A Bench Vice

- D. Next, find a 6mm square block. It will seat nicely on the under groves of the Scuba-Fix valve.(Picture 3)
- E. The 6mm square block will be used to lock the main valve from rotation, while we work to remove the lock ring. (Picture 4)
- F. Mount this 6mm square block onto the bench vice. Keep the height to just 5mm above the vice clamp. (Picture 5)



Valve Sitting On Top Of Square Block.



18" Pipe Wrench Gripping On The Lock Ring.



Removed Lock Ring.

- G. Sit the valve on the top of the 6mm block. This block will prevent the valve from rotating. (Picture 6)
- H. Use a 18" Pipe Wrench, grip the teeth **onto just the lock ring**. Use a steady, slow and firm motion, turn anti-clockwise. (Picture 7)
- I. Within 2 rounds of anti-clockwise motion, the lock ring will be release from the adhesive that was locking / holding it . (Picture 8)
- J. If necessary, you can sand down the wrench "bite marks" on the lock ring or order a new lock ring from Scuba-Fix Pte Ltd.